

# 36C Series combination gas valves

*Backed with tools to help specify, sell and install faster*

- Standing pilot
- Single stage
- Fast opening
- Max. capacity @ 1" PD – 280,000 BTU/HRR

## Updated packaging includes

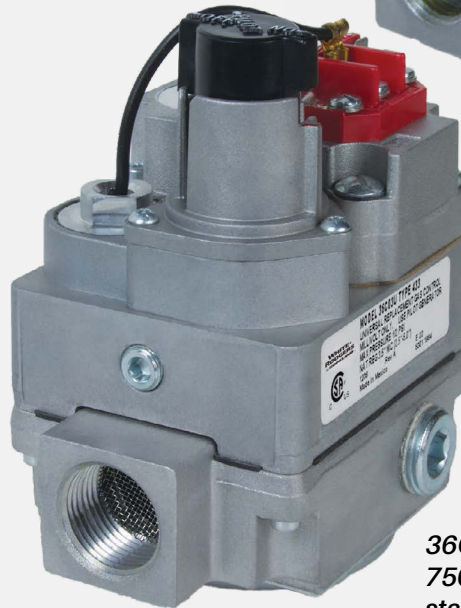
- Clear application description
- Key features and specifications
- Popular model cross reference printed on box
- QR code access for latest cross reference
- Updated installation instructions with wiring diagrams (in English, French and Spanish)

## Complete online cross reference

- Full cross reference for White-Rodgers and competitive gas valves



**36C03-333**  
**24 VAC**  
**standing pilot**



**36C03U-433**  
**750 mV**  
**standing pilot**

The versatile 36C Series combination gas valves cover a wide range of applications. Designed for use with standing pilot systems, it replaces hundreds of existing models in the field.

*White-Rodgers is the leading manufacturer of gas valves to the OEM. When it's time to replace—replace with the same brand trusted by OEM's on their equipment!*

36C Series

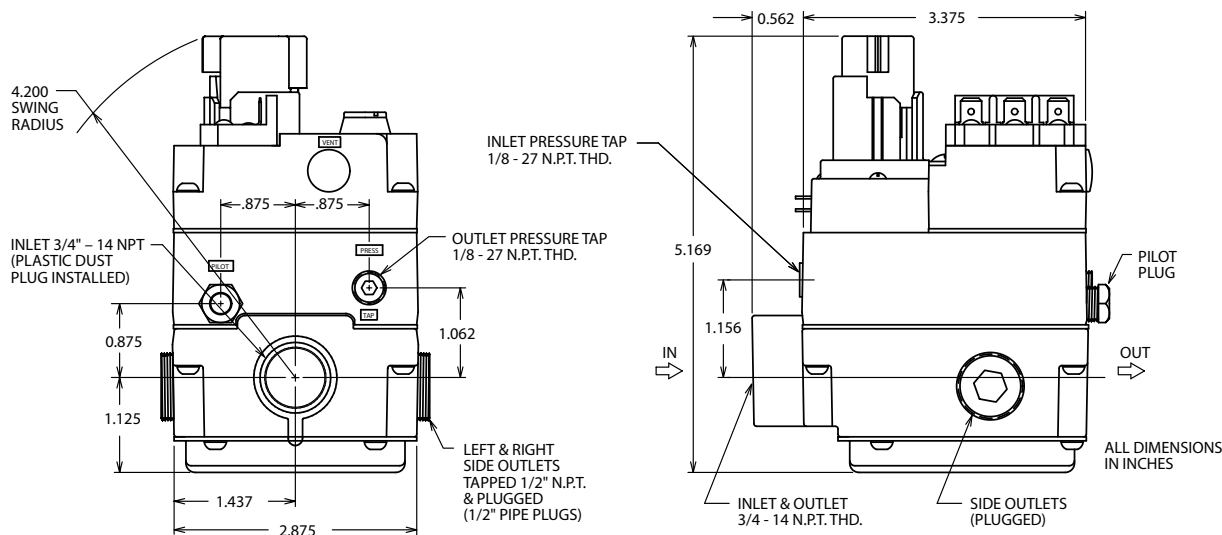
Combination gas valves

Features

- Convertible – natural or LP gas
- Adjustable regulator
- Inlet/outlet screens
- Line interrupter
- Pressure taps
- CSA approved
- Optional side outlets

Specifications

Electrical rating ..... 750 mV, 24 VAC, 0.23 Amps  
Operating ambient temperature ..... -40° to 175°F (-40° to 79°C)  
Pressure rating (max.)..... 1/2 PSI (14.0" W.C.)  
Pilot gas connection ..... 1/4" compression fitting  
Pressure tap..... 1/8" N.P.T.



Pipe size (36 C)	1" PD capacity	
	BTU/HR	
	NAT GAS 0.64 Sp. Gr. (1000 BTU/HR)	LP GAS 1.53 Sp. Gr. (2500 BTU/HR)
1/2" x 3/4"	230,000	372,600
3/4" x 3/4"	280,000	453,600

Valve stages	Regulator adjustment range	
	Nat. gas	LP gas
Single stage	2.5" to 5.0"	7.5" to 12.0"

Model number	Typical app.	Voltage	Type of gas	Pipe size	Opening characteristics	Regulator setting	Regulator adjustment range	Side outlets	Pressure tap	
									Inlet	Outlet
36C03-300	Standing Pilot	24 VAC	Nat./LP	1/2 x 3/4	Fast	3.5"	2.5"-5.0"	No	No	Yes
36C03-333	Standing Pilot	24 VAC	Nat./LP	1/2 x 3/4	Fast	3.5"	2.5"-5.0"	Yes	Yes	Yes
36C03-400	Standing Pilot	24 VAC	Nat./LP	3/4 x 3/4	Fast	3.5"	2.5"-5.0"	No	No	Yes
36C03-433	Standing Pilot	24 VAC	Nat./LP	3/4 x 3/4	Fast	3.5"	2.5"-5.0"	Yes	Yes	Yes
36C03U-333	Standing Pilot	750 mV	Nat./LP	1/2 x 3/4	Fast	3.5"	2.5"-5.0"	Yes	Yes	Yes
36C03U-433	Standing Pilot	750 mV	Nat./LP	3/4 x 3/4	Fast	3.5"	2.5"-5.0"	Yes	Yes	Yes



Scan here  
for full online  
cross reference

To learn more, visit [copeland.com/white-rodgers](http://copeland.com/white-rodgers)

WR-7045 ©2025 Copeland LP.

**WHITE RODGERS**  
by **COPELAND**